



# cross s1

– THE GAME CHANGER.



We could write an entire book on the adventure that has led to the development and introduction of the Cross S1 series of flyrods, but we won't. Instead, we would rather ask you to try one because the only way to truly understand what we mean is to test one for yourself.



## Cross S1 is built with Powerlux™

3M Powerlux™ Composites feature a revolutionary technology that contains nano-sized spheres of silica so small, they are able to flow between individual filaments of carbon fiber, creating a matrix of strength throughout the entire composite. The resulting material enables designers to develop rods that are not only incredibly strong and durable, but also lighter in weight and more sensitive.

FIG. 1: Getting more nanoparticles between each carbon fiber is the key to the performance enhancements of 3M Powerlux™ Composites.

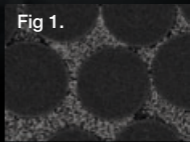


Fig 1.

FIG. 2: This SEM image shows the rough, three-dimensional surface area that occurs when a 3M Powerlux™ Composite is stressed. The exceptional bond between the particle and the resin significantly hinders cracks from spreading. The result: tougher, stronger rods.

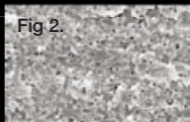


Fig 2.



[www.looptackle.se](http://www.looptackle.se)